

# JUPITER 485-Z NEW

The JUPITER 485-Z screen mount has been redesigned with a shallower profile, reducing the overall size of the bracket.

The new configuration features a more robust locking arm, increasing the strength of the bracket to allow for the mounting of heavier screens.

The updated design offers an increased 10° of downwards tilt and incorporates versatile mounting arms that slide across the bracket to correspond with a wide range of VESA mounting hole positions.

## Features

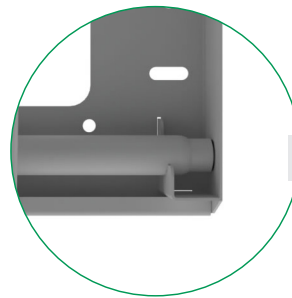
- Offers up to 10° of downwards tilt
- Mounts up to 1100x455 VESA / 80kg screens
- Fully adjustable mounting arms or VESA mounting plates
- Drill resistant locks
- Keeps cables organised and tidy behind the screen
- Locks and secures with push button locks
- Available as closed-back model that can be suspended from ceilings or overhead structures

## Product Information

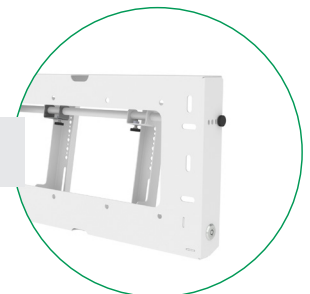
Code	485-Z01	485-Z02	485-Z03
VESA (MAX)	460x265	800x455	1100x455
Screen Weight (MAX)	80kg	80kg	80kg
Wall Mounting Centres (MAX)	552mm(W) x 210mm(H)	849mm(W) x 210mm(H)	1149mm(W) x 210mm(H)

## Screen Bracket Dimensions

485-Z01			
W: 590mm	D: 326mm	H: 62mm	
485-Z02			
W: 930mm	D: 326mm	H: 62mm	
485-Z03			
W: 1230mm	D: 326mm	H: 62mm	



Robust locking bar



Redesigned with a shallower profile

## Standard Paint Finishes



## Non-Standard Finishes

We offer a range of non-standard colours and finishes. Many custom colours can be supplied at standard pricing but may incur an additional cost, depending upon your selection.