

JUPITER-NUC

Models

Jupiter-NUC

Dimensions

Screen Mount

W:	D:	H:
860mm	470mm	56mm

PC Enclosure

W:	D:	H:
38mm	230mm	190mm

Overview

JUPITER-NUC screen mount is a light-in-weight mounting bracket that secures heavy screens to the wall. With a pocket designed to house an NUC PC turning older screens and televisions that do not have built in internet and wireless connectivity into SMART devices is made simple.

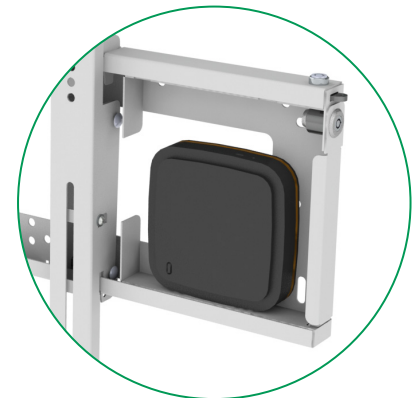
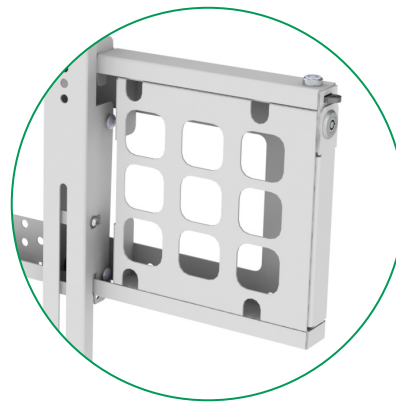
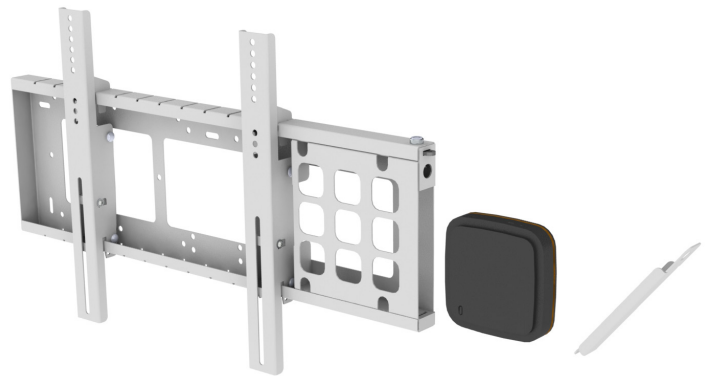
The JUPITER-NUC range can accommodate screens with up to 500mm wide VESA mountin holes and a maximum weight of 95kg.

Features

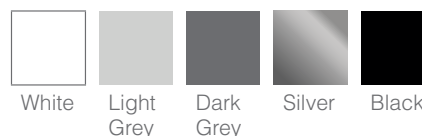
- Designed to secure micro PC devices.
- Wall-mounts screens up to 500mm wide VESA and 95kg in weight.
- Adjustable arms accommodate the majority of mounting hole positions.
- Keeps cables organised and tidy behind the screen
- Holes in security plate allow simple cable routing/management
- Ventilation for Micro PC
- Locks and secures with a push button lock

Benefits

- Easily add a NUC or micro PC to a screen converting older screens and televisions into SMART devices.
- No trailing cables, everything is housed neatly behind the screen.



Standard Paint Finishes



Non-Standard Finishes

We offer a range of non-standard colours and finishes. Many custom colours can be supplied at standard pricing but may incur an additional cost, depending upon your selection.