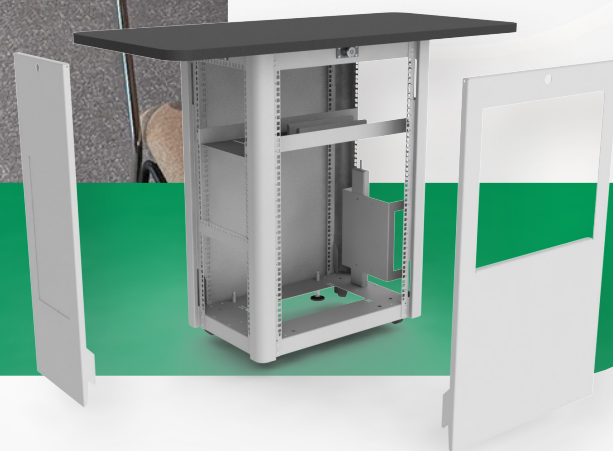




10-year
mechanical
warranty

5-year
electrical

Four lockable and detachable sides providing easy access to equipment



Rubi

Rubi is an economical media cabinet for small rooms. It is a compact solution allowing it to be placed in areas where space is limited. All four sides of Rubi are lockable and detachable from the frame providing easy access to equipment.

The standard unit comes with six power sockets and 16U of horizontal rack space at 350mm depth (or 5U of vertical rack space at 500mm depth) with half of the rack space accessible to the user through apertures that may be adjusted to suit your access requirements.

Features

- 16U (horizontal/350mmD)
5U (vertical 500mmD) rack space
- Four detachable and lockable side panels
- Concealed castors



Utilise any sized space

Slim unit helps utilise the smallest room spaces.



Secure your AV equipment

Robust steel construction and drill resistant locks ensure security.



Seamless AV integration

Complete internal cable management creates an 'all-in-one' solution.



Rushed for time?

Available on a 10-working-day in a range of standard colours & finishes.



Standard paint finishes
White / Light grey / Dark grey / Silver / Black
Standard worktop finishes
White / Black / Oak / Beech / Maple

Our lecterns effectively integrate and enhance the use of your technology

Visualiser

**Ergonomic
monitor mount**

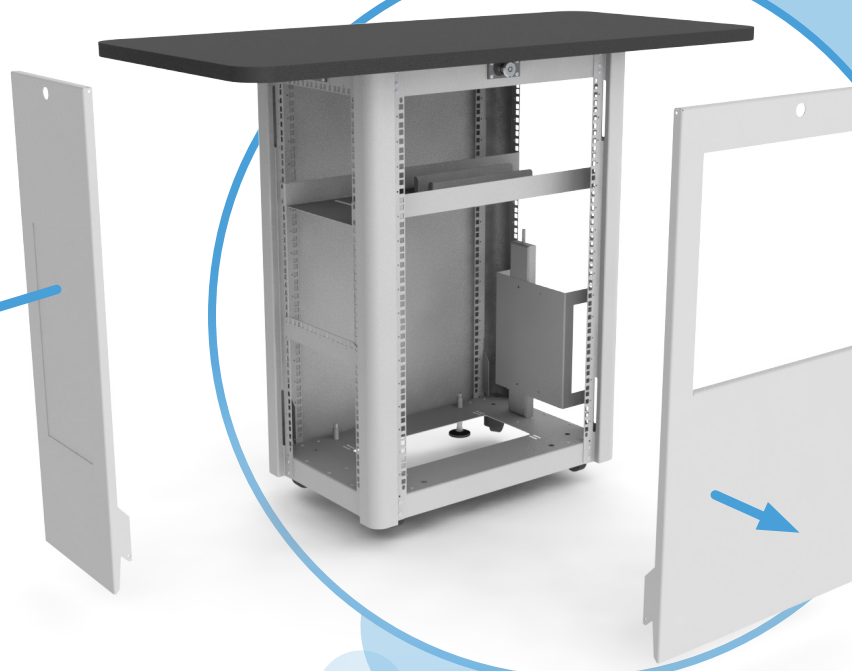
**Quick & easy worktop
connectivity**

Secure your expensive AV / IT equipment with our tamper proof designs



Rack space for
AV/IT equipment

Four lockable and
detachable sides
providing easy access
to equipment



Models

Mono	R2L-072
Mono+	R2L-120

Included

Rack shelves are no longer supplied as standard. They remain available FOC on request.

- Standard paint, worktop & edge banding finishes
- Half U's open in lecturer facing panel (as standard)
- 16U (horizontal/350mmD) / 5U (vertical 500mmD) rack space
- Concealed castors
- Six gang power socket
- Worktops are supplied with a thickness of 18mm

Additional cost

- Non-standard paint, worktop & edge banding finishes
- 2-tone colour finish (standard paint finishes)
- Visualiser housing
- Control panel housing
- Writing surface inlay
- Vinyl branding / wrap
- Printed branding
- Monitor arm (ENDO72 or 82)
- Desktop machining

Dimensions

Mono

Worktop:	W: 725mm	D: 500mm	
Body:	H: 667mm	W: 440mm	D: 900mm

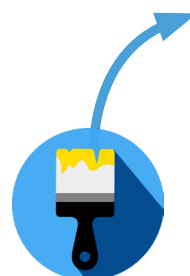
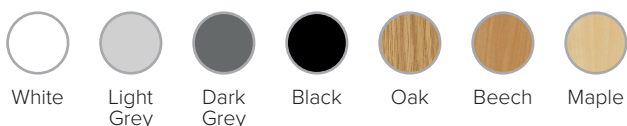
Mono+

Worktop:	W: 1200mm	D: 560mm	
Body:	H: 667mm	W: 440mm	D: 900mm

Standard paint finishes



Standard worktop & edge banding finishes



Make it your own!

We offer a wide range of non standard colours and finishes. Custom colours can be supplied at standard pricing but may incur an additional cost.