



PRODUCT DETAILS

STARLITE

The STARLITE PRESENTER is a mobile height adjustable presentation station with an inclined or flat work-surface, designed to accommodate two visualisers so that the user may easily switch between media or present multiple items simultaneously.

Our visualiser housing for the STARLITE features an aperture for a confidence monitor, allowing the lecturer to easily keep track of what is being displayed without the need to divert their attention from the audience.

The unit can be customised to suit the needs of the user with a custom control panel housing and a choice of glass or ceramic writing surface inlays. The additional 2U of top-loading full width storage allows for equipment to be securely concealed.

Features

- Fully electrically height adjustable
- Internal top loading 2U rack mount
- Braked castors
- Optional supports for visualisers to house a confidence monitor



Height adjustable

Entire worktop rises and falls to suit user preference.



Engage your audience

Allows for lecturers to present using two separate visualisers simultaneously



Facilitates seamless AV/IT integration

Complete internal cable management creates an 'all-in-one' solution.

Models

STARLITE

SL2

Included

- Inclined OR flat worktop
- Pen tray
- Electrically height adjustable
- Choice of standard paint, worktop & edge banding finishes
- 2U equipment storage within the base unit
- 4x castors (2x braked)
- Worktops are supplied with a thickness of 25-40mm

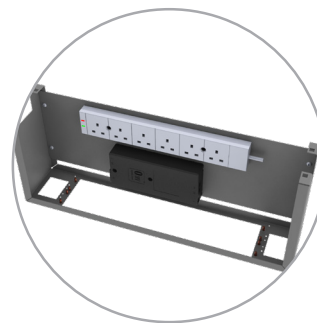
Additional cost

- Non-standard paint, worktop & edge banding finishes
- Vinyl branding
- Printed branding
- Dry/wet wipe in-lay panel to your size
- Monitor arm (ENDO 72 or 82)
- Housings for visualiser(s)
- Custom control panel housing
- Desktop machining (to agreed layout)
- Keyboard shelf

Dimensions

STARLITE

H: 910 - 1250mm (to worktop) W: 1010mm D: 960mm

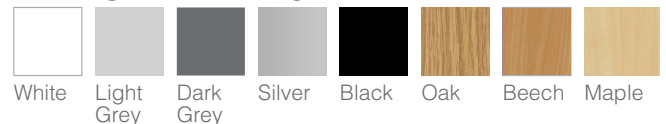


Internal 2U top loading rack

Standard Paint Finishes



Standard Worktop & Edge Banding Finishes



Make it your own!

We offer a range of non-standard colours and finishes. Many custom colours can be supplied at standard pricing but may incur an additional cost.