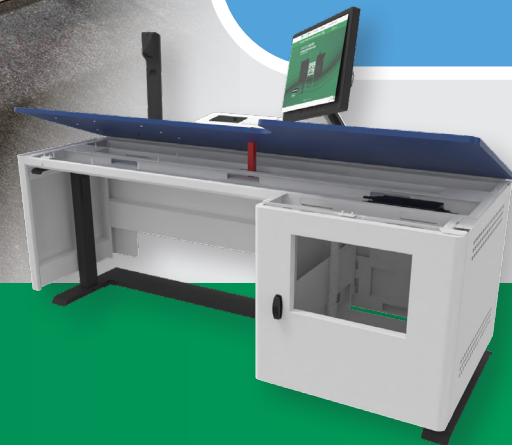


Hinged worktop for easy cable access and maintenance



Aurora

Aurora is our brand new Equality Act compliant audio visual lectern with an electrically height adjustable worktop and rack space to suit all user needs.

Designed with accessibility in mind, this lectern features a scalloped accessible worktop design to ensure all controls are in reach of the user and a spacious foot well for wheelchair access.

Features

- Fully height adjustable worktop and rack
- 12U removable rack space
- Front and rear door rack access



Equality Act compliant

Worktop and rack space rises and falls to suit user needs



Removable 19" rack

Allows rack to be populated whilst the lectern is being built.



Secure your AV equipment

Robust steel construction and drill resistant locks ensure security.



Seamless AV integration

Complete internal cable management creates an 'all-in-one' solution.



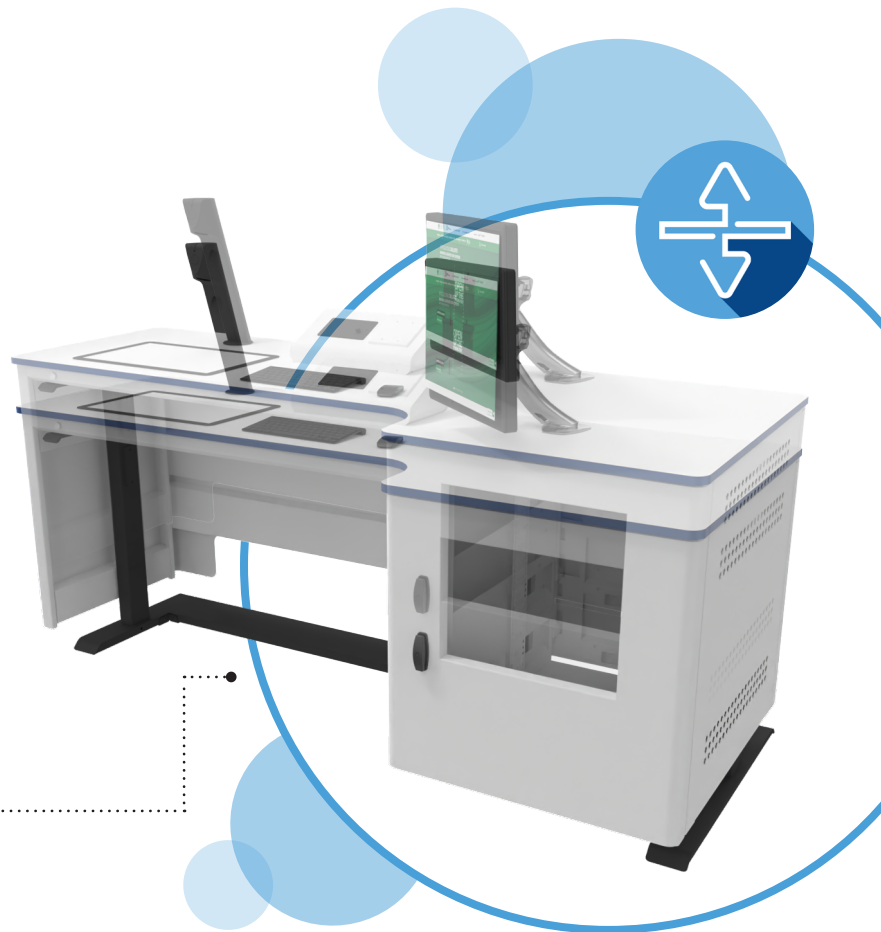


Scalloped accessible design to ensure all controls are in reach of the user

Visualiser, monitor, and control panel housing are all easily accessible

Worktop and rack space rises and falls to suit user needs

Spacious foot well and cut out in vanity panel for wheelchair access





Front and rear opening doors for easy rack maintenance

Removable rack allows rack to be populated while lectern is being built

Hinged worktop and cable channel for easy cable access and maintenance

Energy chain for efficient cable management at all required heights



Models

1600 Mono - 12U	AU1M12UXX-160
1800 Mono - 12U	AU1M12UXX-180
2000 Mono - 12U	AU1M12UXX-200
2200 Mono - 12U	AU1M12UXX-220
2200 Duet - 24U	AU1DT12UXX-220

Included

Rack shelves are no longer supplied as standard. They remain available FOC on request.

- Standard paint, worktop & edge banding finishes
- Hinged worktop
- Illuminated branding
- 12U removable rack
- Half U's open in door (as standard)
- Monitor arm (ENDO72 or 82)
- Left or right hand rack
- Front and rear opening rack doors
- Worktops supplied with a thickness of 25-40mm

Additional cost

- Non-standard paint, worktop & edge banding finishes
- Vinyl or printed branding
- Visualiser housing
- Control panel housing
- Writing surface inlay
- Desktop machining

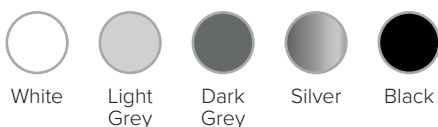
Dimensions

Widths: 1600 / 1800 / 2000 / 2200

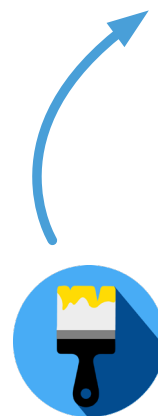
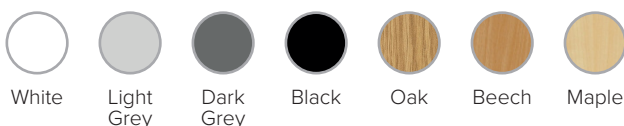
D: 800mm H: 760 - 1200mm

D: 600mm (shallower section)

Standard paint finishes



Standard worktop & edge banding finishes



Make it your own!

We offer a wide range of non standard colours and finishes. Custom colours can be supplied at standard pricing but may incur an additional cost.